

THE HILL

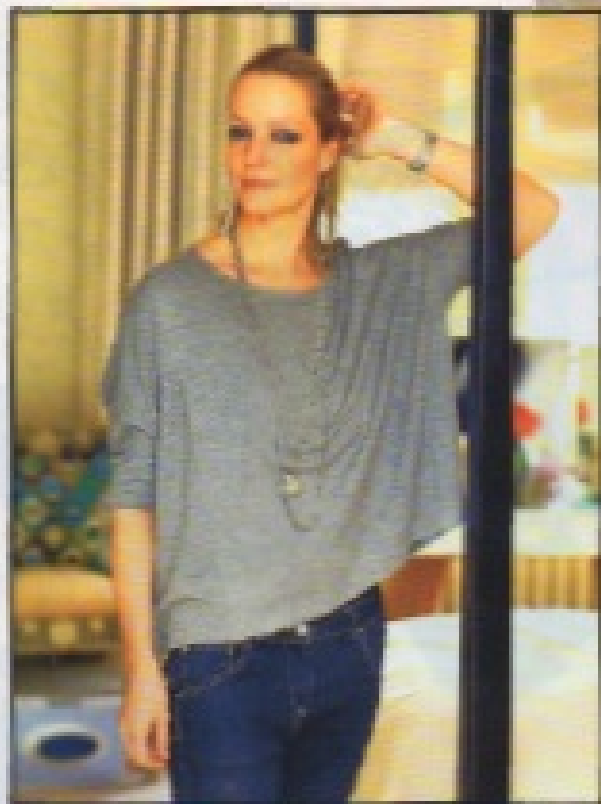
Bake yourself
healthy with
AMBER ROSE



Fashion
in bloom

The stylish side to the
Chelsea Flower Show

May 2013



In this climate you need colour, I wanted something that would bounce the light around

spent the last eight years in Ladymore Grove, drawn to the area by its creative vibe. I love Portobello and Golborne Road. I have a lot of friends around here and I love that I can walk everywhere too,' she says.

Her home, a one-bedroom, first-floor flat in a converted Victorian townhouse, has evolved into an eclectic mix of antiques, art, designer pieces and high street finds. 'I loved the high ceilings and proportions when I first walked in,' says Dick. 'My place in Chelsea was a similar size but had much smaller rooms, so I've been able to slowly add more interesting pieces here.'

When she moved in, the floor hadn't been touched since the 80s, so Dick ripped up the laminate floor, had the place sound-proofed and laid wooden floorboards, which were painted white throughout. 'In this climate you need light and colour,' she says. 'I wanted something that would bounce the light around.' She had the height of the doors raised to increase the feeling of space and went for a relaxing French Grey by



Dick transformed the look of her kitchen with a splash of all-pew green by The Paint and Paper Library